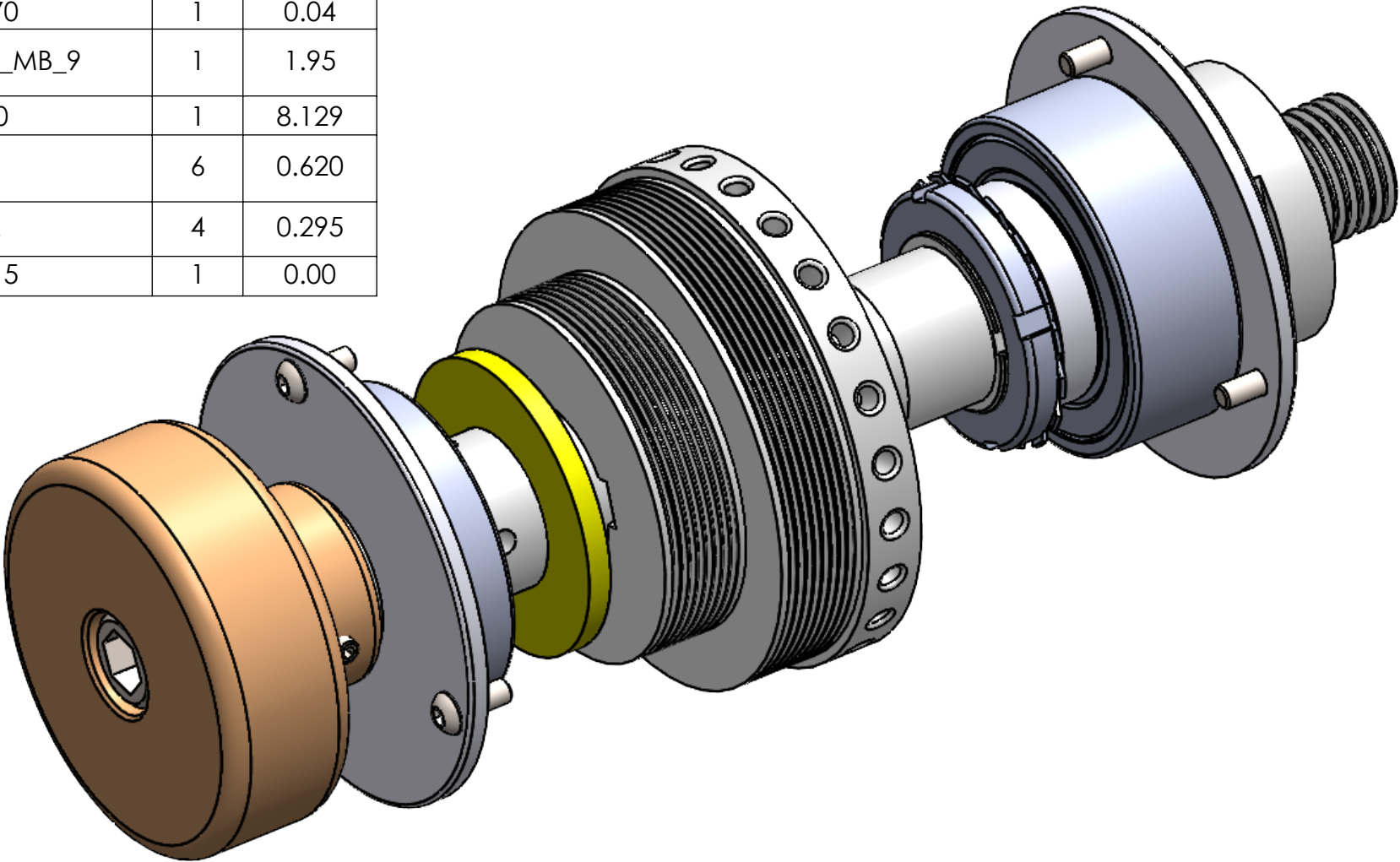

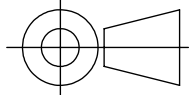
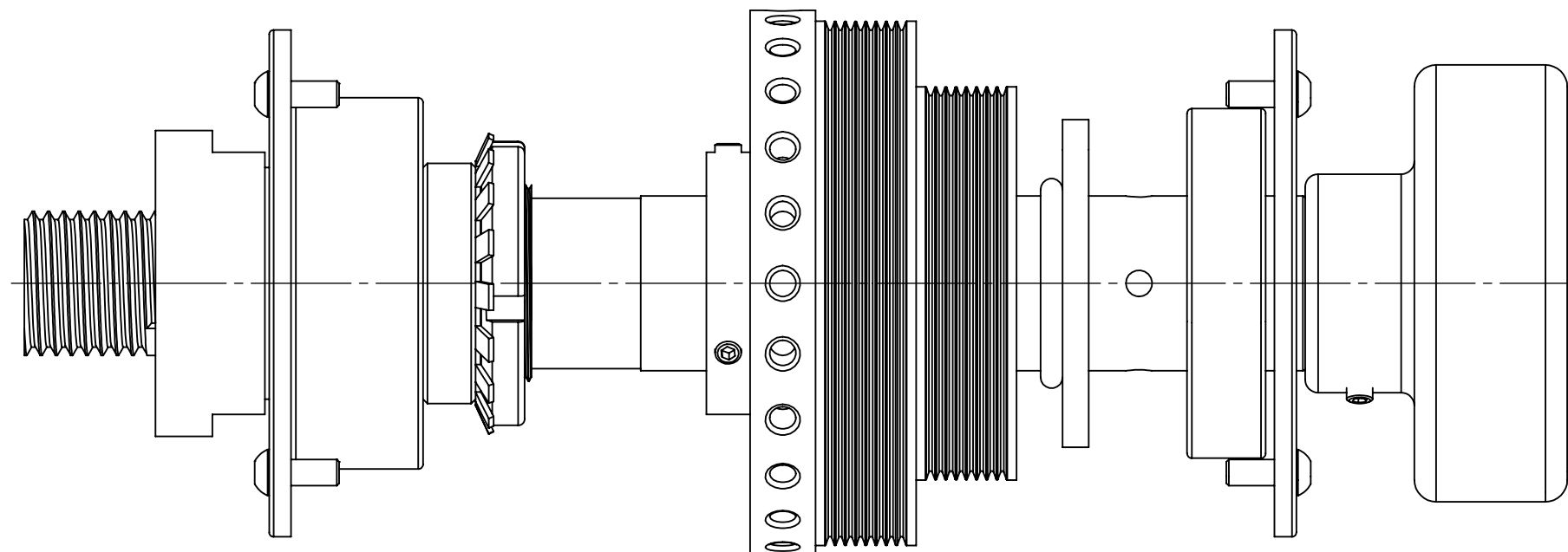
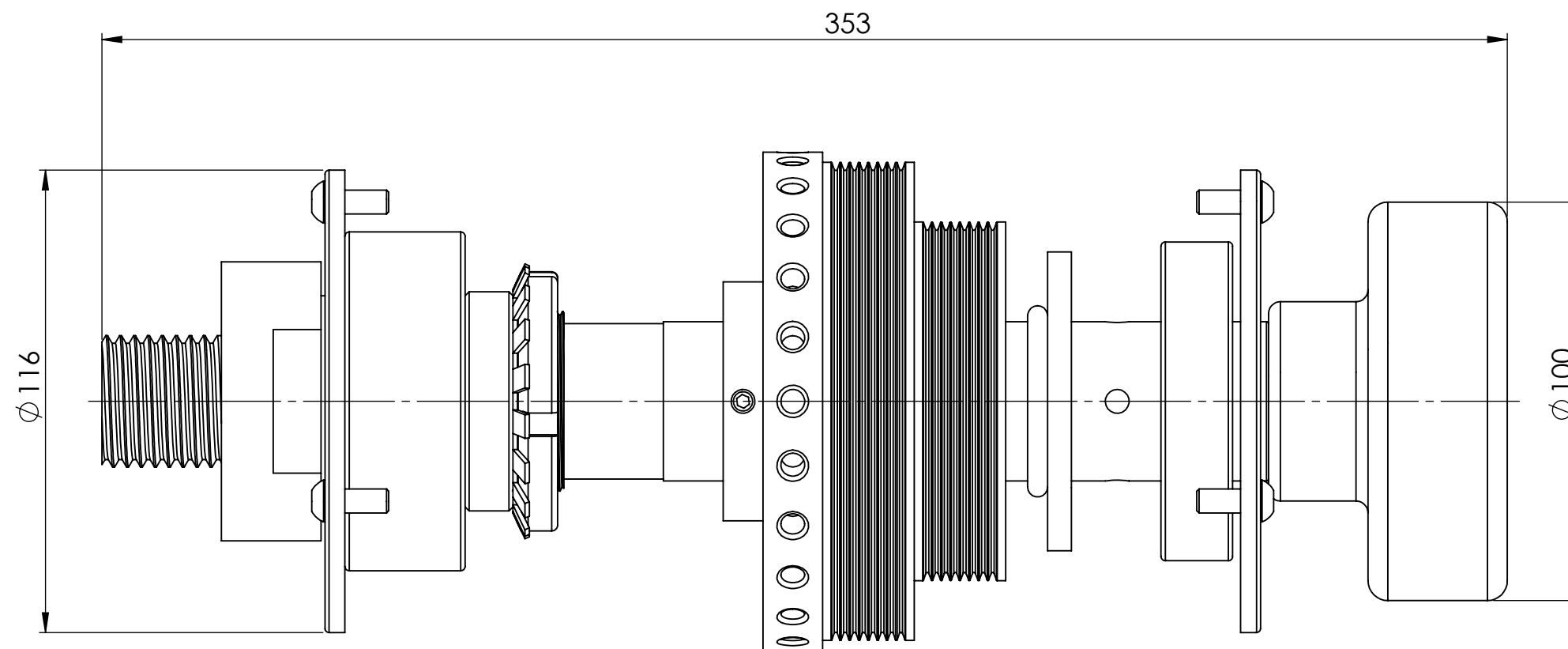
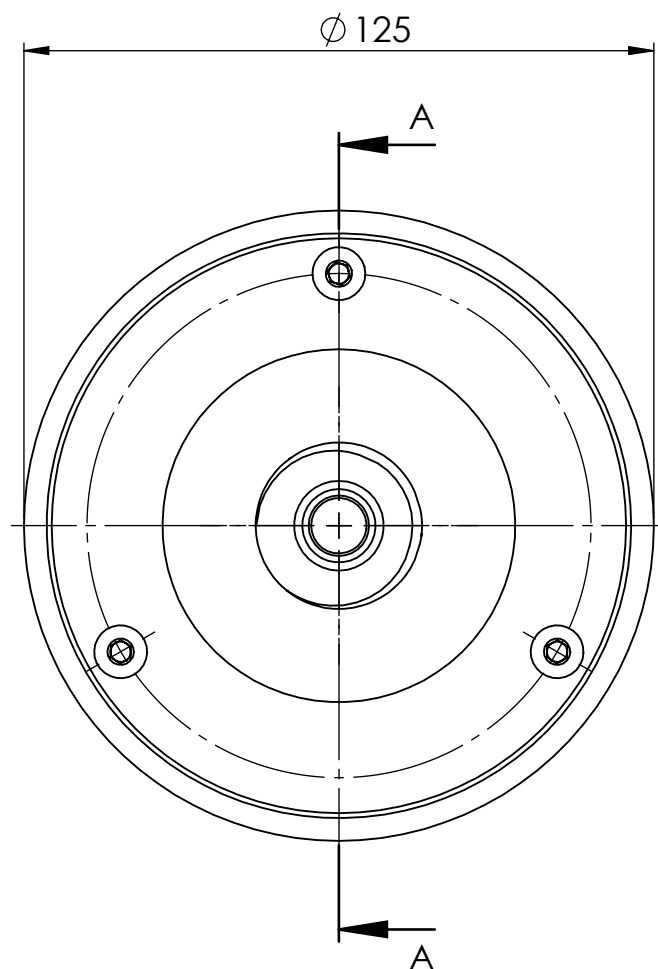


ITEM NO.	DESCRIPTION	MATERIAL	PARTNO	QTY.	WEIGHT [kg]
1	SPINDLE SHAFT	AS1045 - COLD DRAWN	SWL-P301	1	3.24
2	MAIN PULLEY / INDEXER	AS1045 - COLD DRAWN	SWL-P310	1	3.96
3	Bearing 6208-2RS		Bearing_6208-2rs	1	
4	Bearing 3209-2RS		Bearing_3209-2rs	1	
5	SPINDLE HANDWHEEL	6061 Alloy	SWL-P312	1	0.76
6	Bearing Nut km9	Material <not specified>	SKF_NUT_km_9	1	16.61
7	SPINDLE FRONT COVER	GR 250	SWL-P201	1	0.32
8	SPINDLE BACK COVER	GR 250	SWL-P202	1	0.36
9	VACUUM SEAL	PTFE (general)	SWL-P205	1	0.04
10	O RING	Rubber	SWL-P430	1	0.00
11	FRONT BEARING SPACER	AISI 1018/20 (BCQ)	SWL-P314	1	0.07
12	KEY SPINDLE TO PULLEY	KEY STEEL EN6A	SWL-P370	1	0.04
13	Bearing Lock Washer MB9	Material <not specified>	SKF_WASHER_MB_9	1	1.95
14	SOCKET HEAD CAP SCREW M16X30	GR. 8.8	M16X30	1	8.129
15	SOCKET BUTTON HEAD CAP SCREW M6X16	Socket Button Head Cap Screw M6x16	M6X16	6	0.620
16	Socket Set Screw Cup Point M6x12M6x12		M6X12	4	0.295
17	Tacho Magnet	Plain Carbon Steel	SWL-P415	1	0.00



<div><p>2 Valentine Street Ballarat, Victoria, 3353, Australia TELEPHONE: +613 5337 5700 FAX: +613 5336 4524 web: www.asema.com.au e-mail: sales@asema.com.au</p></div>	<div>© THIS DRAWING IS PROPERTY OF ASEMA International PTY LTD. PUBLICATION OF INFORMATION OR DISCLOSURE TO ANY THIRD PARTY IN ANY FORM IS PROHIBITED WITHOUT WRITTEN CONSENT.</div> <div>UNLESS OTHERWISE SPECIFIED: DIMENSIONS ARE IN MILLIMETERS TOLERANCES: No Decimal Points: ±0.5mm One Decimal Point: ±0.1mm Two Decimal Points: ±0.02mm Angular: ±0.5°</div> <div>REMOVE ALL BURRS & BREAK SHARP EDGES</div>	F E D C B A REV			PROJECTION: THIRD ANGLE			MATERIAL: SEE PARTS LIST			COMPANY: Stute Wood Lathes						
										STOCK SIZE:			PROJECT: Stutey 3040 Lathe				
					DRAWN BY: P Stute	DRAWN DATE: 12/12/2024			SOURCE:			TITLE: Spindle Assembly					
					CHECKED BY:	CHECKED DATE:			FINISH:			FILE NAME: SWL-A03			SHEET: 1 OF 3		
												PART NUMBER: SWL-A03			REVISION: A		
					SHEET SIZE: A3	SCALE: 1:1.5			QTY/SET: 1			WEIGHT [kg]: 8.95					
			DESCRIPTION	DATE													



2 Valentine Street
Ballarat, Victoria, 3353, Australia
TELEPHONE: +613 5337 5700 FAX: +613 5336 4524
web: www.asema.com.au e-mail: sales@asema.com.au

© THIS DRAWING IS PROPERTY OF ASEMA International PTY LTD. PUBLICATION OF INFORMATION OR DISCLOSURE TO ANY THIRD PARTY IN ANY FORM IS PROHIBITED WITHOUT WRITTEN CONSENT.

UNLESS OTHERWISE SPECIFIED:
DIMENSIONS ARE IN MILLIMETERS
TOLERANCES:
No Decimal Points: $\pm 0.5\text{mm}$
One Decimal Point: $\pm 0.1\text{mm}$
Two Decimal Points: $\pm 0.02\text{mm}$
Angular: $\pm 0.5^\circ$

REMOVE ALL BURRS &
BREAK SHARP EDGES

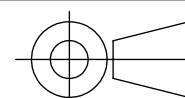
F
E
D
C
B
A
REV

DESCRIPTION

DATE

PROJECTION:

THIRD ANGLE



DRAWN BY:

P Stute

DRAWN DATE:

12/12/2024

CHECKED BY:

CHECKED DATE:

SHEET SIZE:

A3

SCALE:

1:1.5

QTY/SET:

1

MATERIAL:

SEE PARTS LIST

STOCK SIZE:

SOURCE:

FINISH:

WEIGHT [kg]:

8.95

COMPANY:

Stute Wood Lathes

PROJECT:

Stutey 3040 Lathe

TITLE:

Spindle Assembly

FILE NAME:

SWL-A03

PART NUMBER:

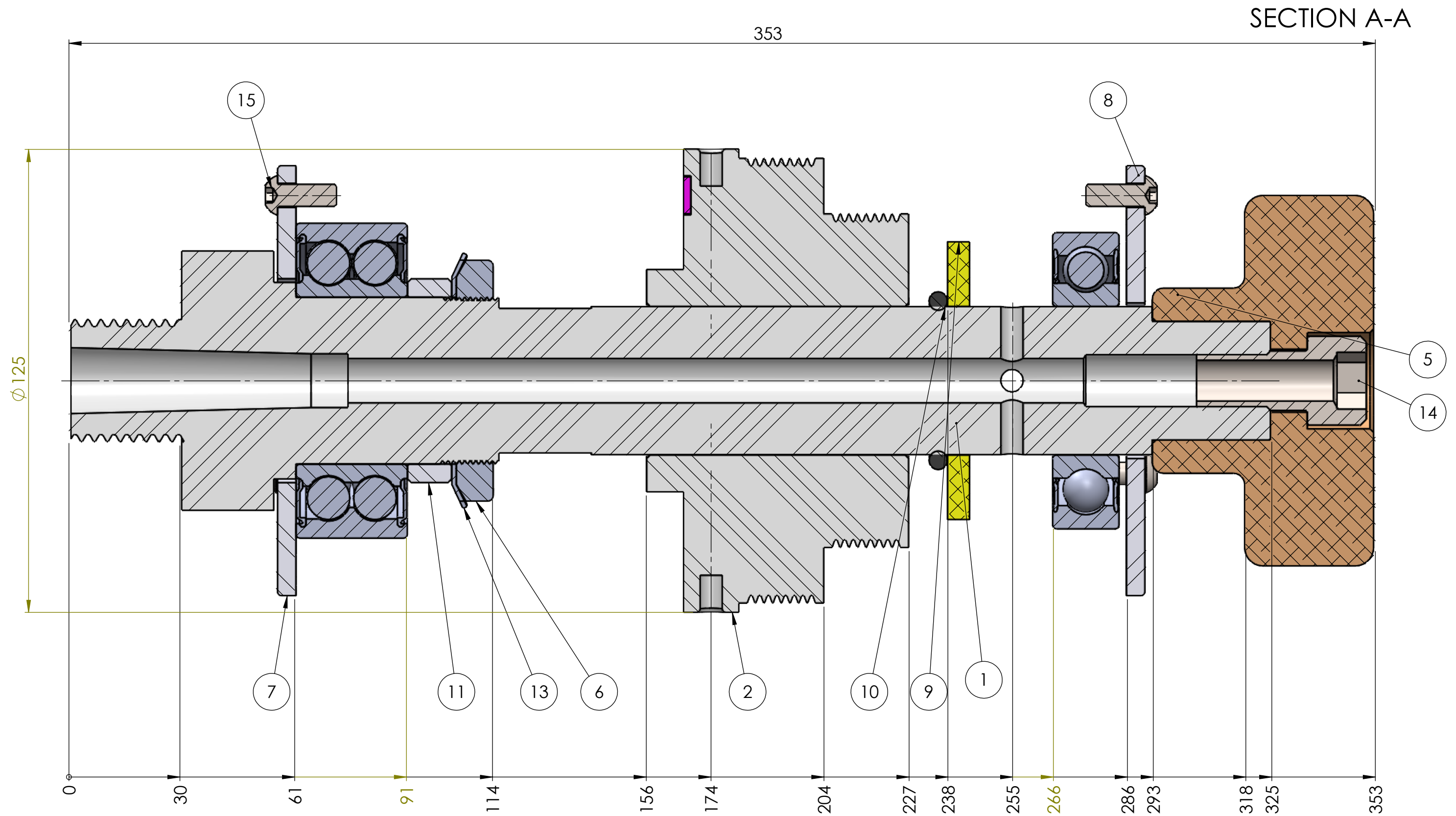
SWL-A03

SHEET:

2 OF 3

REVISION:

A



2 Valentine Street
Ballarat, Victoria, 3353, Australia
TELEPHONE: +613 5337 5700 FAX: +613 5336 4524
web: www.asema.com.au e-mail: sales@asema.com.au

© THIS DRAWING IS PROPERTY OF ASEMA International PTY LTD. PUBLICATION OF INFORMATION OR DISCLOSURE TO ANY THIRD PARTY IN ANY FORM IS PROHIBITED WITHOUT WRITTEN CONSENT.

UNLESS OTHERWISE SPECIFIED:
DIMENSIONS ARE IN MILLIMETERS
TOLERANCES:
No Decimal Points: ±0.5mm
One Decimal Point: ±0.1mm
Two Decimal Points: ±0.02mm
Angular: ±0.5°

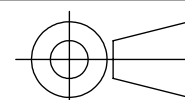
REMOVE ALL BURRS &
BREAK SHARP EDGES

F
E
D
C
B
A
REV

DESCRIPTION

DATE

PROJECTION:
THIRD ANGLE



DRAWN BY:
P Stute

DRAWN DATE:
12/12/2024

CHECKED BY:

CHECKED DATE:

SHEET SIZE:

SCALE:

QTY/SET:

MATERIAL:

SEE PARTS LIST

STOCK SIZE:

SOURCE:

FINISH:

WEIGHT [kg]:

8.95

COMPANY:

Stute Wood Lathes

PROJECT:

Stutey 3040 Lathe

TITLE:

Spindle Assembly

FILE NAME:

SWL-A03

PART NUMBER:

SWL-A03

SHEET:

3 OF 3

REVISION:

A